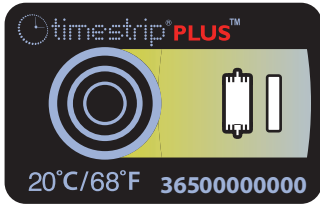


Product Specification

Timestrip® PLUS 20 °C TP-365



General:

Each Timestrip® PLUS indicator is a small, self-adhesive label that can be attached to a product, package or carrying card*. It monitors temperature and indicates when a maximum threshold has been breached. It is irreversible and also records the total time duration of one or more breaches.

* see adhesive specification in Appendix 1 below for further details.

Each product in the range has been engineered for a different maximum threshold temperature so customers can choose the Timestrip® PLUS that best suits their needs.

How to use:

Timestrip® PLUS indicators are completely inert prior to activation and can be stored at room temperature.

To activate Timestrip® PLUS, the surrounding temperature must be above the stated threshold temperature so that the blue dyed liquid can be released from the button. Fully squeeze the button and check that the first window turns blue and the word 'On' appears. If not, immediately re-squeeze the button fully. Within 2-3 minutes of activation, place the indicator below its STOP temperature for a minimum of 1 Hour so that the liquid freezes and the indicator is fully conditioned and ready to use. If the carrying card or the product to be monitored is already at or below the STOP temperature then the indicator can be stuck directly to it by removing the adhesive liner on the back.

Threshold Temp	Stop temp*	Run-Out window**
20 °C/68 °F	18 °C/64 °F	2 Hours

* The temp at which the run-time advancement

(the movement of the blue dye) will stop.

** The run-out window is calibrated to an isothermal temp of +2 °C deg above the stated/printed Threshold temp.

I) Performance Specifications:

- Temp Accuracy: ± 1 °C/2 °F
- Time Accuracy: ± 15 % in time under isothermal conditions
- Progress Isotherms: See Fig. 1
- Display: Continuous, irreversible
- Usage: The usage of the product in any assembly or production line must be agreed upon in advance, as it may alter performance specifications.

II) Product Specification:

- Button Position: Button on Top (BOT)
- Colour of Progressing Front: Blue
- Adhesive: #2641, Pressure sensitive, -40 °C to +110 °C, Finger lift See Appendix 1
- Product drawing: See Fig. 2
- Graphics: See Fig. 3
- Other: Not suitable for immersion in water
- Remark: Run-time window length will vary slightly between production batches.

III) Product Construction:

The indicator is constructed of polymeric assembly multilayer and aluminium-plastic laminate. It encapsulates coloured liquid chemicals*.

* Maximum weight of colorant is < 0.5 mg.

** Liquid chemicals are listed in the Food Chemicals Codex and/or approved by the Food and Drug Administration (FDA) under Title 21, and/or considered generally recognized as safe (GRAS).

*** All materials are non-toxic, latex, silicon and PVC free.



the smart way to measure time & temperature

IV) Storage Conditions (un-activated):

- Store in a cool dark environment away from heat sources.
- Recommended: 22 °C/72 °F at 20-80% RH.
- Please note that before activation, the product can tolerate short term exposure. during transit (hours or a few days) to temperatures in the range -30 °C to +55 °C. However, long term storage should be under recommended conditions.

V) Shelf-life:

- 2 Years – an expiry date is stated on each pack.

visit www.timestrip.com

Fig 1: Progress Isotherm

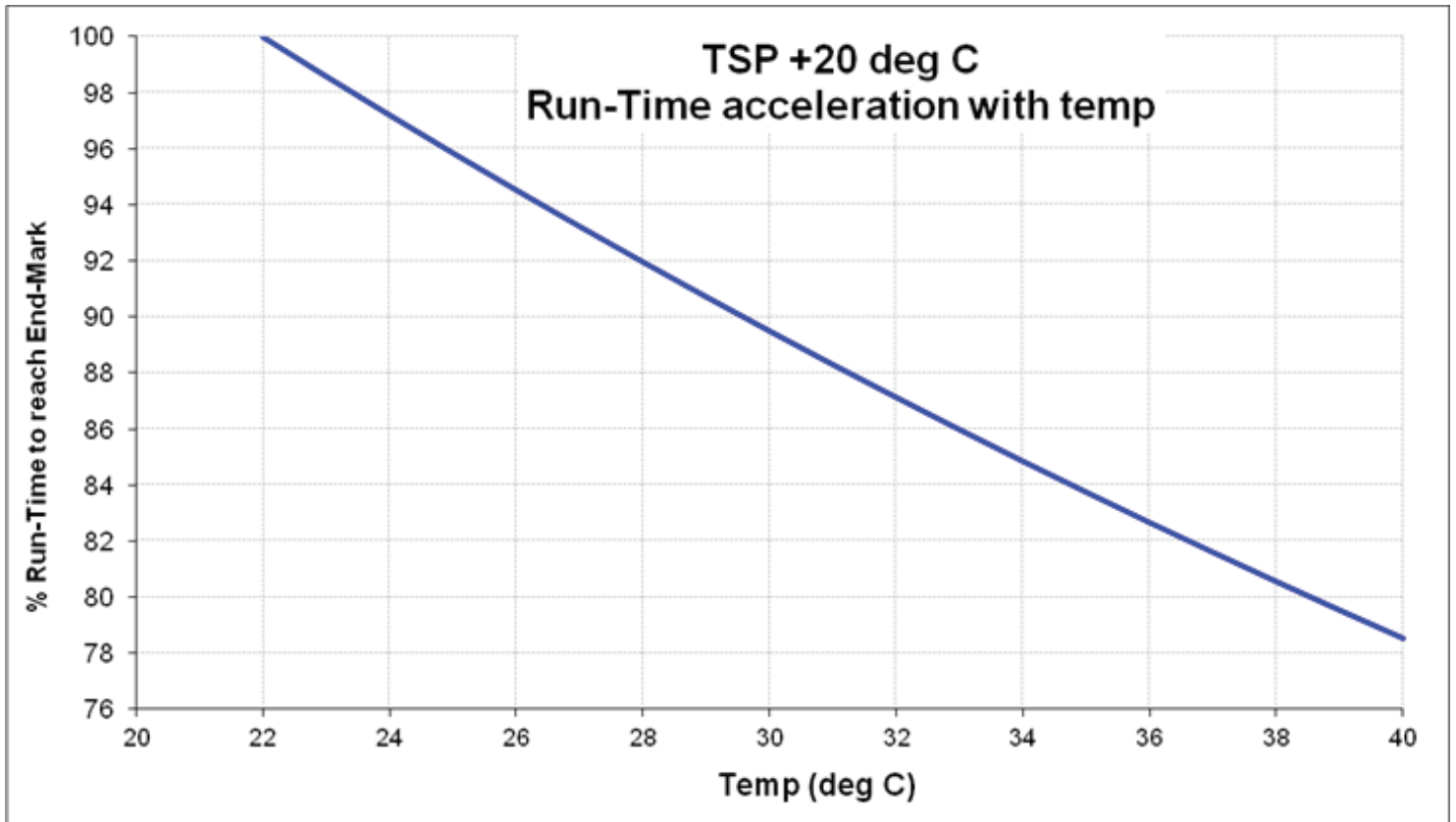


Fig 2: Product Drawing

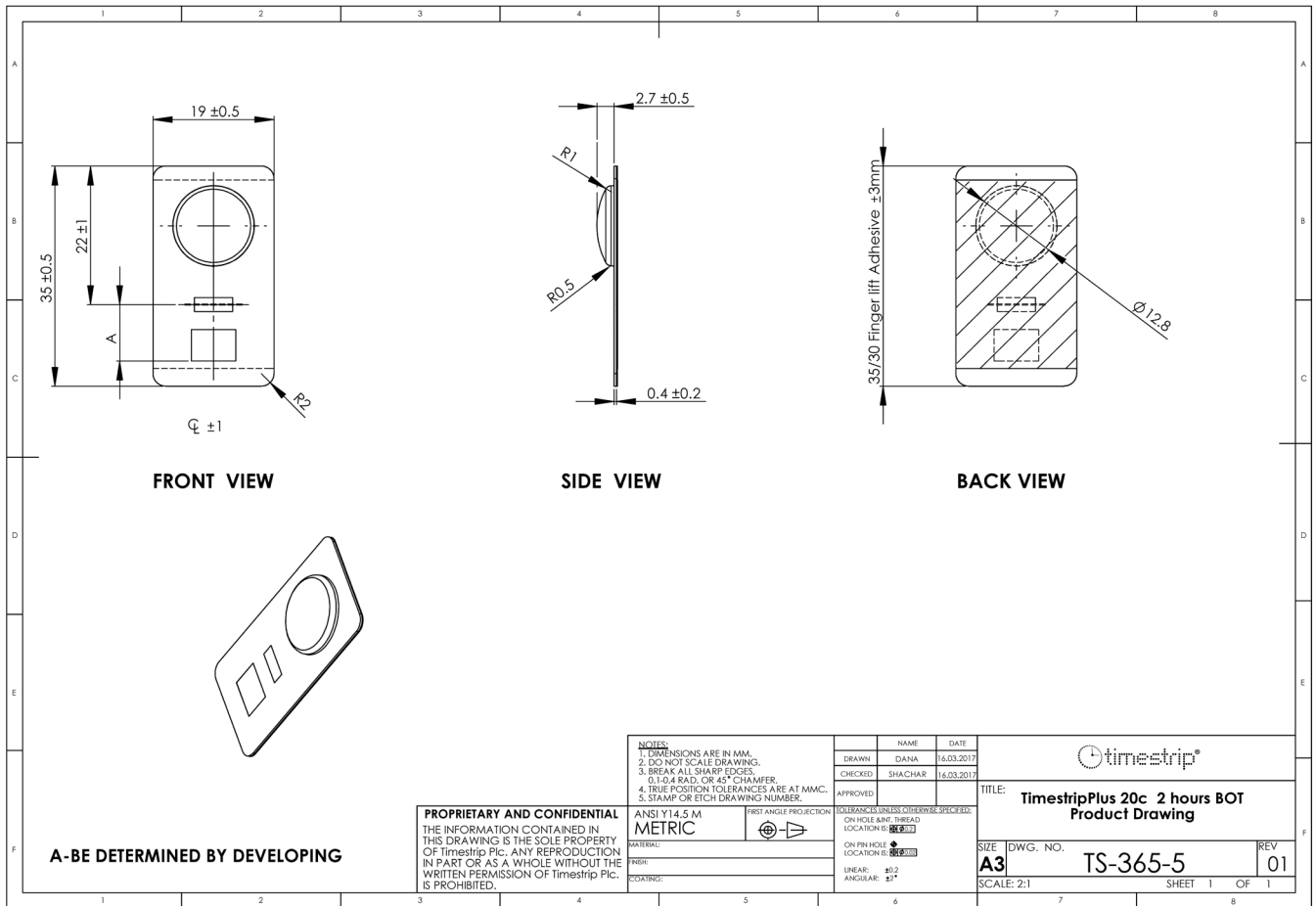
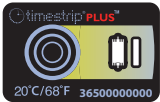



Fig 3: Graphics

Before




20°C/68°F 3650000000

After activation



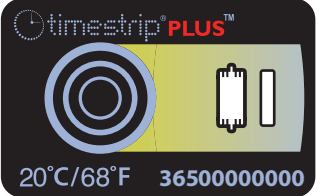
20°C/68°F 3650000000

After



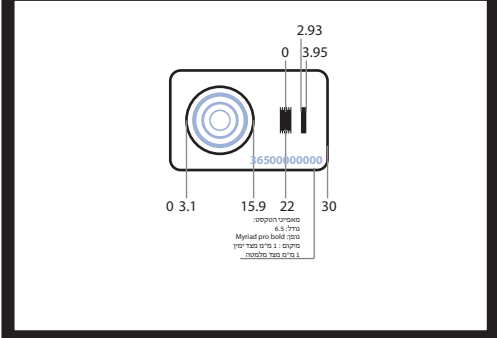
20°C/68°F 3650000000

200%



20°C/68°F 3650000000

Dimensions



0 3.1 15.9 22 30

0 2.93 3.95

3650000000


מדידת המידות
בגודל 1:1
Myriad print lab/01/17/17
תאריך: 1.1.2017

Color printing

Pantone	for time-strip use only
536 EC	c1 m3 y1 k10
	P485 ec
	black
	m17 y100 k10
	0/0/6/0

***For Approval:**

1. Print out, sign and Fax to +972-9-8991347 or
2. Send a Mail with the approved graphics attached to mail.

Customer approval *			
Name		Title: TimestripPlus 20c 2 hours BOT	
Sign.		Graphic no.	Rev. 04
Date		800-365	SH. 1 OF. 1
		Graphic Designer: DANA 06.03.17	
		Lin. Tolerance: ±0.5mm. Drawing No.:	
		Printing DWG: TSP2-L-00000	

