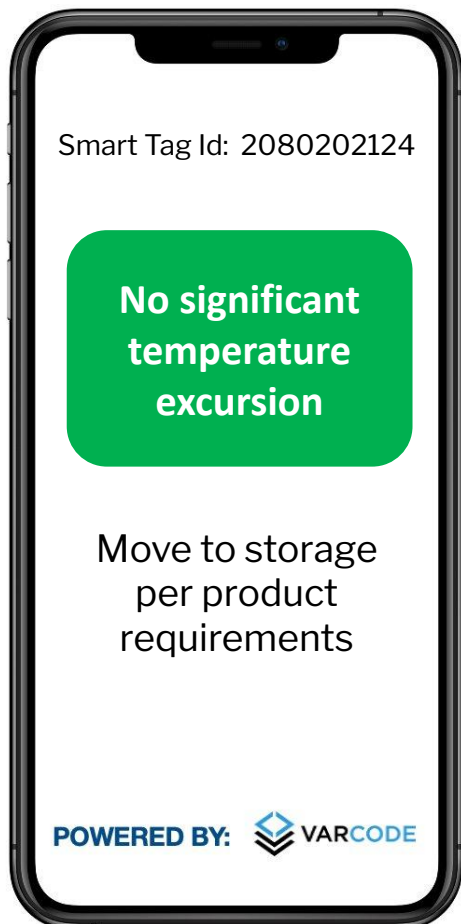



Smart Tag™

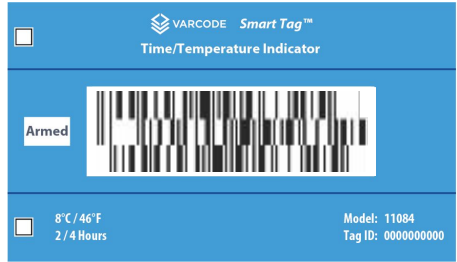
Time & Temperature Monitoring

Varcode's Smart Tag™ is a single use, irreversible time and temperature indicator that accurately records your product's cumulative time over the threshold temperature

A Smart Tag™ instantly and accurately alerts over temperature readings with a simple scan, no interpretation required

- 1 Scan QR Code
- 2 Scan Smart Tag Barcode
- 3 View Time and Temp Results



- Dynamically changes based on pre-defined time and temperature parameters
- Clear results in just two scans
- Captures temperature variance when it occurs at every scan point



Not active



Target Temperature Maintained

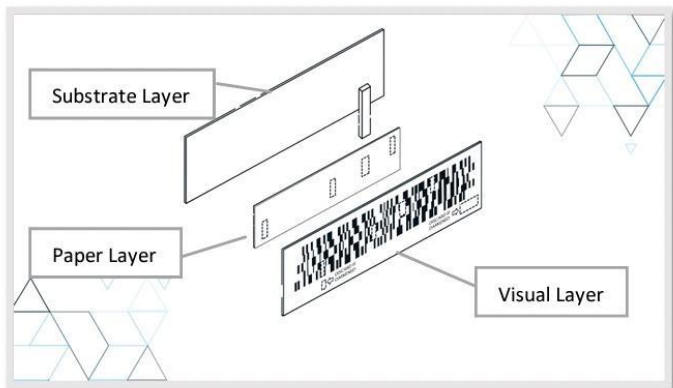


Minor Excursion 1st Breach



Major Excursion 2nd Breach

- Easy to use, no setup, no training
- Customizable alert screens
- Cost effective solution for cold chain monitoring
- Delivers irreversible evidence of temperature exposure



Learn more about the Varcode technology
[How Varcode works](#)

Construction and Performance

The Smart Tag™ is a rectangular flat label containing layers of recyclable paper, plastic, adhesive, and other components. The heart of the tag is an ink reservoir pad containing a mixture of black dye and specialty chemicals having the desired melting point.

The Smart Tag™ tracks temperature exposure as soon as the start tab is pulled.

Tag Details

Tag Size: 47mm x 78mm / 3.25" x 2" (plus tab)

Temperature Accuracy: +/- 1°C/2°F

Storage: Store 3°C/6°F below threshold temperature

Shelf Life: Activate tag within 1 year of creation. Tag will remain active for at least 2 years

Threshold Temperatures	Threshold Times	Smart Tag™ Model
-16°C/3°F	2/4 Hrs	13160
0°C/32°F	2/4 Hrs	11004
6°C/43°F	2/4 Hrs	110624
8°C/46°F	2/4 Hrs	11084
25°C/77°F	2/4 Hrs	11254

Custom temperatures and times available upon request

Choose Smart Tag™

Cost Effective: Use on every pallet, case, box and unit. At a low cost per unit valuable information is provided on product safety, package success and more.

Operationally Easy: Smart Tag™ requires no batteries, no new hardware or software. Integrate into your current operations or implement on its own.

Cloud Management and Data Storage: Each scan digitally captures temperature exposure over time, date, time and location of scan. Maintained as a permanent digital record needed to make intelligent business decisions.

Contact Us:
info@innolabel.eu